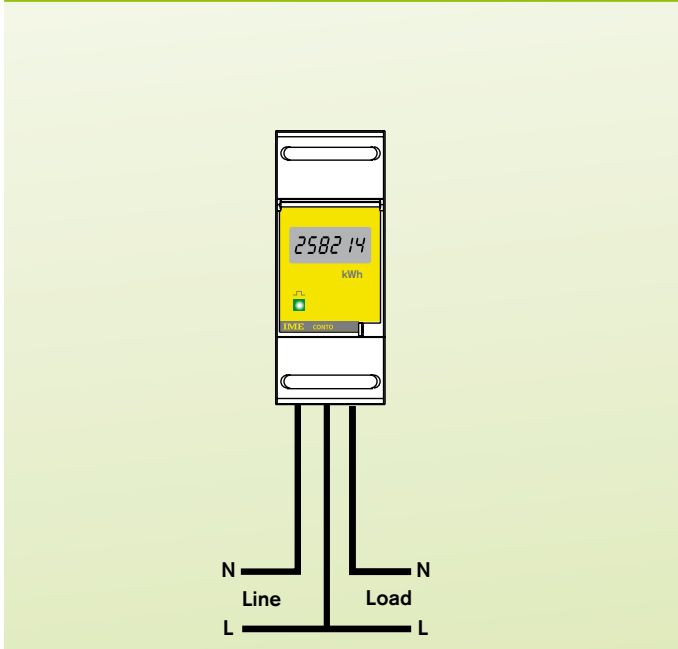


Conto D2-b Energy Meters – DIN Rail Mounting



- 2 module DIN rail mounting
- Single phase network
- Active energy class 1 (EN 62053-21)
- Direct connection up to 36A, 240V, 50/60Hz
- 6 digit LCD display
- Self supplied auxiliary

Function Diagram



How to Order / Model Reference

eg **CE21 1 7 5 A 0**

Model	CE21					
Electrical System						
Single phase		1				
Range						
36A 50/60Hz			7			
Voltage						
230/240V				5		
Supply						
Self supplied					A	
Output						
No pulsed output						0

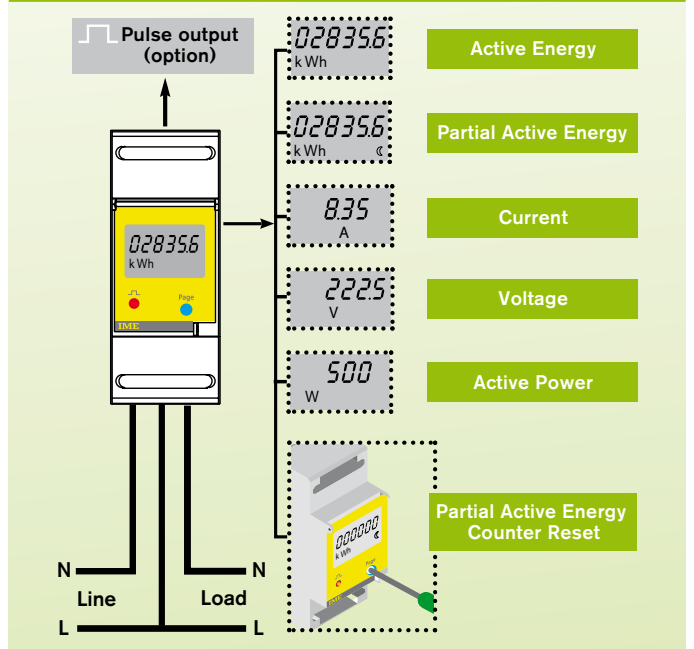
DATA SHEET : RD1015

Conto D2 Energy Meters – DIN Rail Mounting



- 2 module DIN rail mounting
- Single phase network
- Active energy class 1 (EN 62053-21)
- Partial active energy (resettable)
- Voltage, current (true RMS value)
- Active power (kW)
- Direct connection up to 36A or 63A, 240V, 50/60Hz
- 6 digit LCD display
- Self supplied auxiliary
- Optional pulsed output

Function Diagram



How to Order / Model Reference

eg **CE20 1 8 5 A 2**

Model	CE20					
Electrical System						
Single phase						
Range						
36A 50/60Hz					7	
63A 50/60Hz						8
Voltage						
230/240V						5
Supply						
Self supplied						A
Output						
No pulsed output						0
Pulsed output						2

DATA SHEET : RD1020