

Conto D4-Pd Energy Meters – DIN Rail Mounting

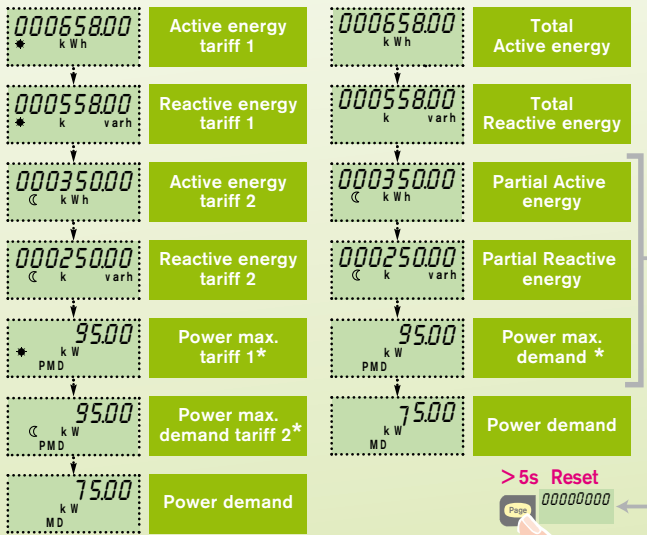


Flush Mounting
See kit page 3

Free Software
On request

- 4 module DIN rail mounting
- Single phase and 3 phase (3 or 4 wire) network unbalanced load
- Active energy class 1 (EN62053-21)
- Reactive energy class 2 (EN62053-23)
- Partial active and reactive energy (resettable)
- Power demand
- Power max demand
- Twin tariff
- Direct connected up to 63A
- 190...440V phase to phase (50/60Hz) measured voltage
- 8 digit LCD display
- Pulsed output or RS485 communications
- Self supplied auxiliary

Function Diagram



How to Order / Model Reference

eg **CE4DT 06 A 4**

Model	CE4DT
Voltage	06
Supply	A
Output	4
Pulsed output	2
RS485 communication	4

DATA SHEET : RD1025

Conto D4-Pt Energy Meters – DIN Rail Mounting

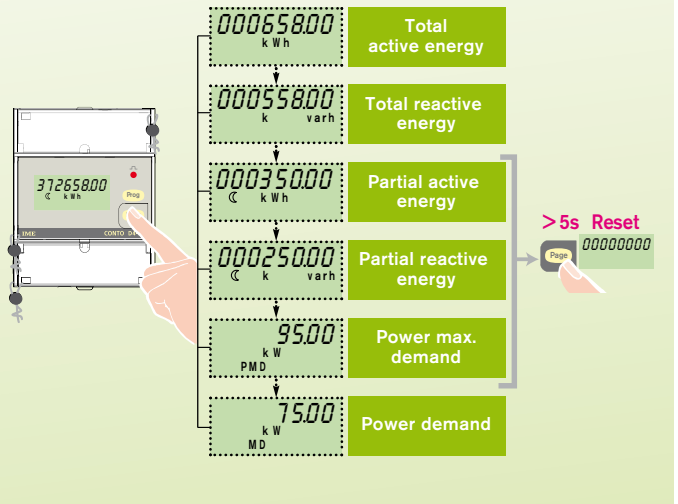


Flush Mounting
See kit page 3

Free Software
On request

- 4 module DIN rail mounting
- Single phase and 3 phase (3 or 4 wire) network unbalanced load
- Active energy class 1 (EN62053-21)
- Reactive energy class 2 (EN62053-23)
- Partial active and reactive energy (resettable)
- Power demand
- Power max demand
- -/1A or -/5A current transformer operated
- VT input 80...150V phase to phase
- Programmable VT & CT ratio
- 80...150V or 190...440V phase to phase (50/60Hz) measured voltage
- 8 digit LCD display
- Pulsed output or RS485 communications
- Self supplied auxiliary

Function Diagram



How to Order / Model Reference

eg **CE4DT 1 4 A 2**

Model	CE4DT
Range	
1A or 5A input	1
Voltage	
80...150V phase - phase	2
190...440V phase - phase	4
Supply	
Self supplied	A
Output	
Pulsed output	2
RS485 communication	4
Pulsed output & RS485 communications	6

DATA SHEET : RD1030