

# Conto 96-Sh

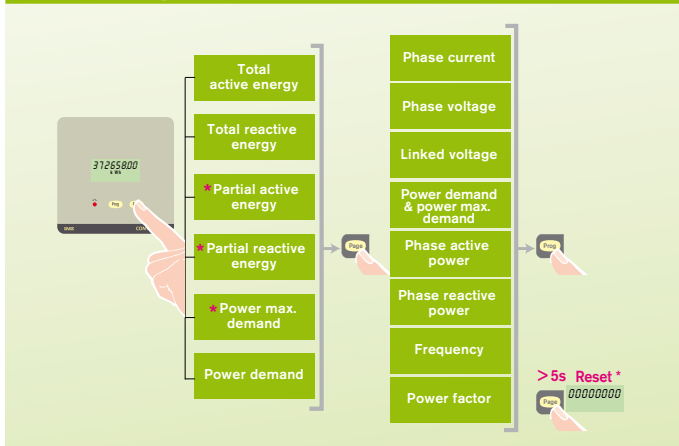
## Energy Meters – Panel Mounting



Free Software  
On request

- 96 x 96mm flush panel mounting
- Single phase & 3 phase (3 or 4 wire) network unbalanced load
- Active energy class 1 (EN62053-21)
- Reactive energy class 2 (EN62053-23)
- Power demand
- Power max demand (resettable)
- Partial active and reactive energy (resettable)
- Phase Current
- Phase to phase and phase to neutral voltage
- Frequency
- Phase active power
- Phase reactive power
- 3 phase active/reactive and apparent power
- Power factor
- -/1A or -/5A ct operated
- 190...440V 50/60Hz measured voltage
- 8 digit LCD display
- Self supplied auxiliary
- Pulsed output or RS485 communications
- Programmable CT ratios

### Function Diagram



### How to Order / Model Reference

eg **CE96S 1 4 A 4 / 770**

Model	CE96S								
Range		1							
1A or 5A input			4						
Voltage				A					
190...440V phase - phase					2				
Supply						4			
Self supplied							7	7	0
Output									
Pulsed output									
RS485 communication									
End Code									

DATA SHEET : RD1045

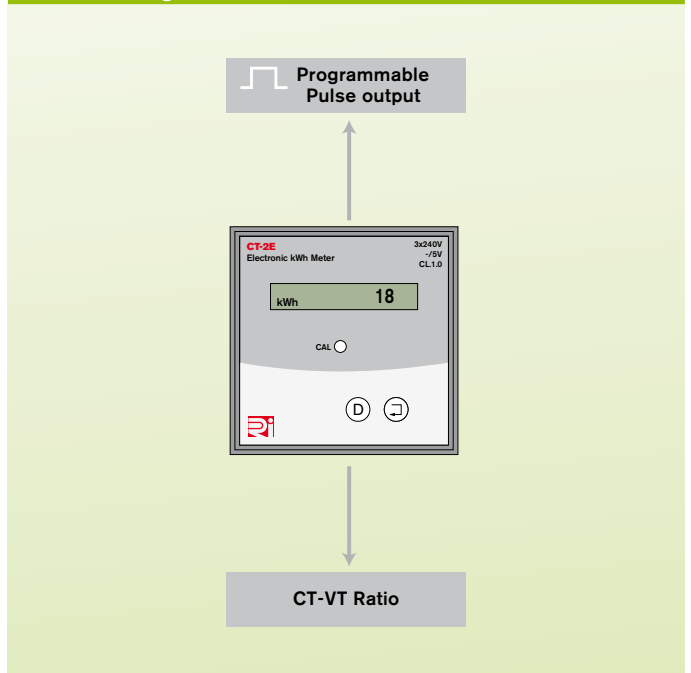
# CT-2E

## Energy Meters – Panel Mounting



- 96 x 96mm flush panel mounting
- Single phase and 3 phase (3 or 4 wire) network unbalanced load
- Active energy class 1 (EN62053-21)
- -/5A current transformer operated
- Programmable CT ratio 5A...6000A
- Semi conductor pulsed output
- Available with RS485 communication
- 6+1 Digit LCD display
- 240V 50/60Hz measured voltage
- Self supplied auxiliary

### Function Diagram



### How to Order / Model Reference

eg **CT-2E A**

Model	CT-2E	A				
Standard model with pulse output						
With RS485* Specify auxiliary for Modbus RTU output						

DATA SHEET : RD1050