

Nemo D4-b

Multifunction Indicators – DIN Rail Mounting



- 4 module DIN rail mounting
- Single phase & 3 phase (3 or 4 wire) network unbalanced load
- Voltage
- Current
- Neutral current
- Average current
- Peak current (resettable)
- Active, reactive and apparent power
- Phase active and reactive power
- Average power
- Peak power (resettable)
- Power factor
- Hours run
- -/1A or -/5A current transformer operated
- Programmable CT ratio
- 80...600V 50/60Hz measured voltage
- Auxiliary supply 115V, 230V, 240V, 400Vac

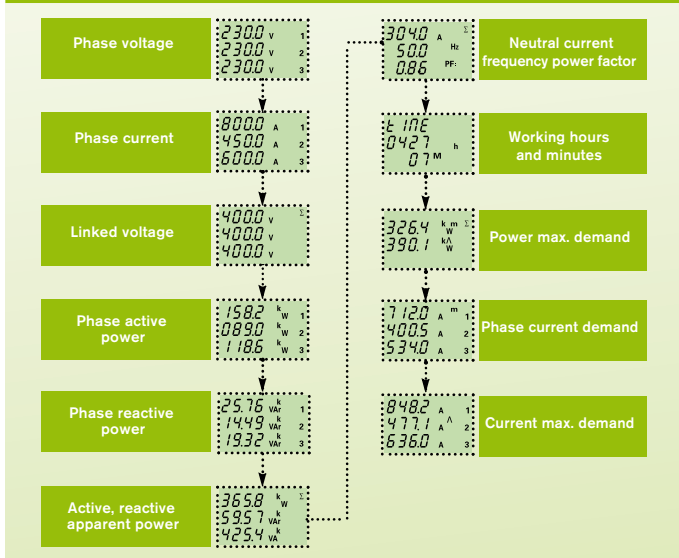
Conto D4-Sh

Multifunction Power Meters – DIN Rail Mounting



- DIN Rail mounting
- Single phase & 3 phase (3 or 4 wire) network unbalanced load
- Active energy class 1 (EN62053-21)
- Reactive energy class 2 (EN62053-23)
- Power demand
- Power max demand (resettable)
- Phase Current
- Phase to phase and phase to neutral voltage
- Frequency
- Phase active power
- Phase reactive power
- 3 phase active/reactive and apparent power
- Power factor
- -/1A or -/5A ct operated
- 190...440V 50/60Hz measured voltage
- 8 digit LCD display
- Self supplied auxiliary
- Pulsed output or RS485 communications
- Programmable CT ratios

Function Diagram



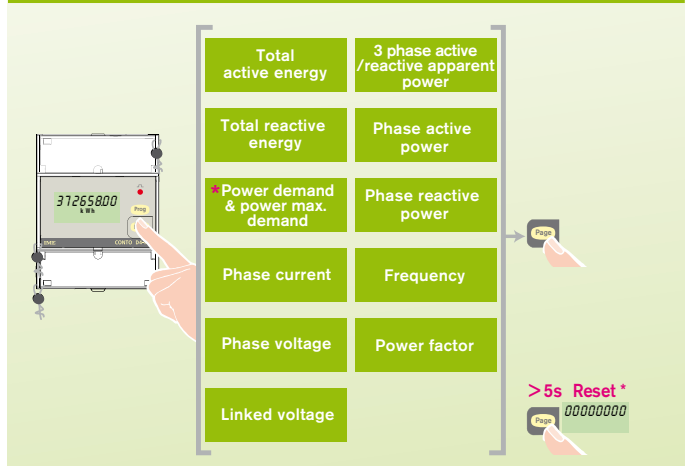
How to Order / Model Reference

eg **MF6GT 0007 6**

Model	MF6GT								
Output									
1A input								0006	
5A input								0007	
Auxiliary Supply									
230/240Vac									6
115Vac									3
400Vac									9

DATA SHEET : RD1085

Function Diagram



How to Order / Model Reference

eg **CE4ST 1 4 A 4 / 770**

Model	CE4ST																			
Range																				
1A or 5A input																				1
Voltage																				
190...440V phase - phase																				4
Supply																				
Self supplied																				A
Output																				
Pulsed output																				2
RS485 communication																				4
End Code																				/ 770

DATA SHEET : RD1090