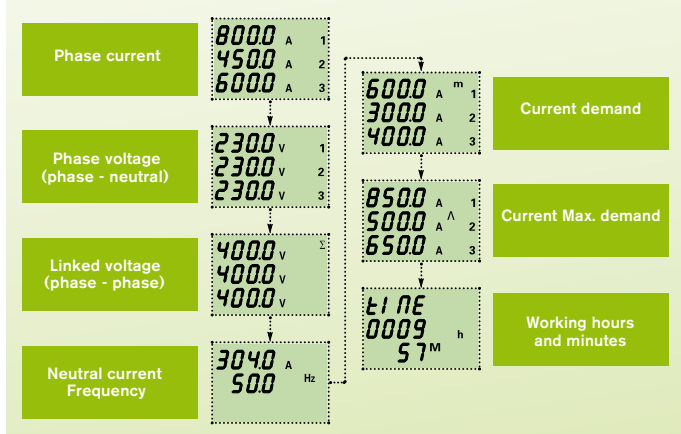


Nemo 72-b Multifunction Indicators – Panel Mounting



- 72 x 72mm flush panel mounting
- Single phase & 3 phase (3 or 4 wire) network unbalanced load
- Voltage
- Current
- Neutral current
- Average current
- Peak current (resettable)
- Active, reactive and apparent power
- Phase active and reactive power
- Average power
- Peak power (resettable)
- Power factor
- Hours run
- -/1A or -/5A current transformer operated
- Programmable CT ratio
- 340...450V phase to phase measured voltage
- Self supplied auxiliary
- 2 alarm relay outputs

Function Diagram



How to Order / Model Reference

eg **MF7G M 0 009A**

| | | | | | | | |
|----------------------------|------|---|---|---|--|------|--|
| Model | MF7G | | | | | | |
| Input V | | | | | | | |
| Single phase & 3ø 4W | | M | | | | | |
| 3ø 3W & 4W | | T | | | | | |
| Output | | | | | | | |
| Standard (no alarm relays) | | | 0 | | | | |
| 2 alarms relays | | | | 2 | | | |
| Input A | | | | | | | |
| 5A input | | | | | | 009A | |
| 1A input | | | | | | 008A | |

DATA SHEET : RD1105

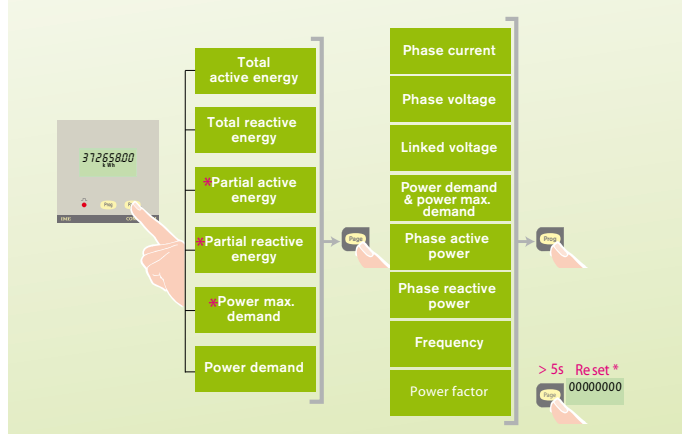
Conto 72-Sh Multifunction Power Meters – Panel Mounting



Free Software
On request

- 72 x 72mm flush panel mounting
- Single phase & 3 phase (3 or 4 wire) network unbalanced load
- Active energy class 1 (EN62053-21)
- Reactive energy class 2 (EN62053-23)
- Power demand
- Power max demand (resettable)
- Partial active and reactive energy (resettable)
- Phase Current
- Phase to phase and phase to neutral voltage
- Frequency
- Phase active power
- Phase reactive power
- 3 phase active/reactive and apparent power
- Power factor
- -/1A or -/5A ct operated
- 190...440V 50/60Hz measured voltage
- 8 digit LCD display
- Self supplied auxiliary
- Pulsed output or RS485 communications
- Programmable CT ratios

Function Diagram



How to Order / Model Reference

eg **CE72S 1 4 A 4 / 770**

| | | | | | | | |
|--------------------------|-------|--|---|---|---|---|-------|
| Model | CE72S | | | | | | |
| Range | | | | | | | |
| 1A or 5A input | | | 1 | | | | |
| Voltage | | | | | | | |
| 190...440V phase - phase | | | | 4 | | | |
| Supply | | | | | | | |
| Self supplied | | | | | A | | |
| Output | | | | | | | |
| Pulsed output | | | | | | 2 | |
| RS485 communication | | | | | | | 4 |
| End Code | | | | | | | / 770 |

DATA SHEET : RD1110