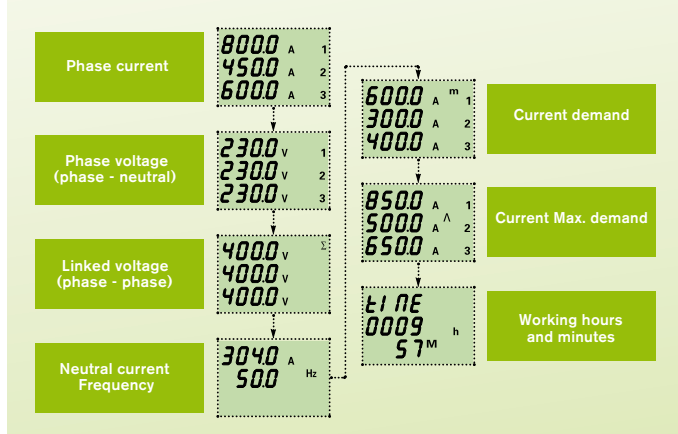


Nemo 96-b Multifunction Indicators - Panel Mounting



- 96 x 96mm flush panel mounting
- Single phase & 3 phase (3 or 4 wire) network unbalanced load
- Voltage
- Current
- Neutral current
- Average current
- Peak current (resettable)
- Active, reactive and apparent power
- Phase active and reactive power
- Average power
- Peak power (resettable)
- Power factor
- Hours run
- -/1A or -/5A current transformer operated
- Programmable CT ratio
- 340...450V phase to phase measured voltage
- Self supplied auxiliary
- 2 alarm relay outputs

Function Diagram



How to Order / Model Reference

| | |
|----------------------------|------|
| eg MF9G T 2 009A | |
| Model | MF9G |
| Input V | |
| Single phase & 3ø 4W | M |
| 3ø 3W & 4W | T |
| Output | |
| Standard (no alarm relays) | 0 |
| 2 alarms relays | 2 |
| Input A | |
| 5A input | 009A |
| 1A input | 008A |

DATA SHEET : RD1125

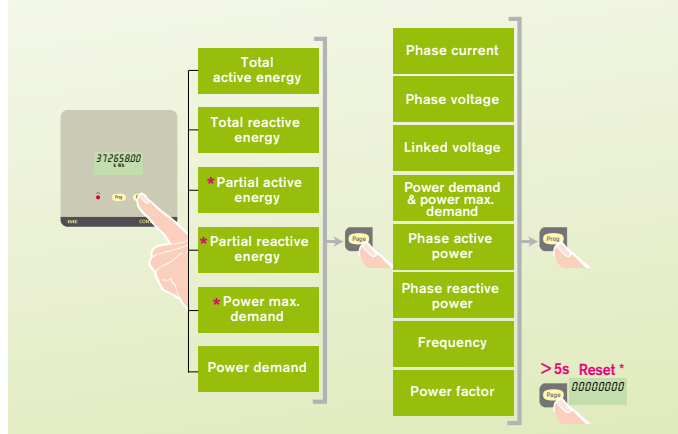
Conto 96-Sh Multifunction Power Meters - Panel Mounting



Free Software
On request

- 96 x 96mm flush panel mounting
- Single phase & 3 phase (3 or 4 wire) network unbalanced load
- Active energy class 1 (EN62053-21)
- Reactive energy class 2 (EN62053-23)
- Power demand
- Power max demand (resettable)
- Partial active and reactive energy (resettable)
- Phase Current
- Phase to phase and phase to neutral voltage
- Frequency
- Phase active power
- Phase reactive power
- 3 phase active/reactive and apparent power
- Power factor
- -/1A or -/5A ct operated
- 190...440V 50/60Hz measured voltage
- 8 digit LCD display
- Self supplied auxiliary
- Pulsed output or RS485 communications
- Programmable CT ratios

Function Diagram



How to Order / Model Reference

| | |
|-------------------------------|-------|
| eg CE96S 1 4 A 4 / 770 | |
| Model | CE96S |
| Range | |
| 1A or 5A input | 1 |
| Voltage | |
| 190...440V phase - phase | 4 |
| Supply | |
| Self supplied | A |
| Output | |
| Pulsed output | 2 |
| RS485 communication | 4 |
| End Code | / 770 |

DATA SHEET : RD1130