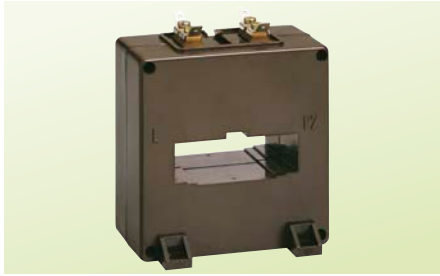
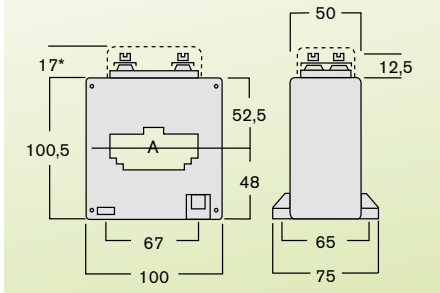


## TAWA (Formerly TAS63P) Protection Current Transformers



- Busbar window 64 x 19, 51 x 20, 41 x 21mm
- Secondary terminals M4 screws and 6.3 x 0.8mm fast-on
- Supplied with busbar mounting bracket and fixing feet
- Optional sealable terminal cover (ATACOP03)
- Weight 900g

### Dimensions



### Current Transformer Ratios

Primary Current A	Burden		Code
	cl. 5P5 VA	cl. 5P10 VA	
250	2.5	1	250
300	3.5	1.2	300
400	4	1.5	400
500	5	1.5	500
600	6	2	600
700	7	2	700
750	7	2	750
800	7	1.5	800
1000	7	1.5	100
1200	10	1.5	120
1250	10	2	125
1500	10	1.5	150
1600	10	1.5	160

1A or 5A Secondary

### How to Order / Model Reference

eg **TAWA 50 C 400**

Model	TAWA						
Output							
-/5A Secondary			50				
-/1A Secondary			10				
Primary							
250...800A				C			
1000...1600A					D		
Range							
Select code from ratio table above							???

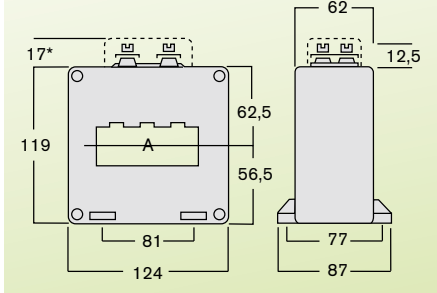
DATA SHEET : RD1370

## TAWB (Formerly TAS80P) Protection Current Transformers



- Busbar window 82 x 32mm
- Secondary terminals M4 screws and 6.3 x 0.8mm fast-on
- Supplied with busbar mounting bracket and fixing feet
- Optional sealable terminal cover (ATACOP03)
- Weight 2000g

### Dimensions



### Current Transformer Ratios

Primary Current A	Burden				Code
	cl. 5P5 VA	cl. 5P10 VA	5P51 VA	5P20 VA	
300	8	4	2.5	1.5	300
400	10	5	3	2	400
500	12	6	4	2.5	500
600	15	7	4.5	3	600
700	16	8	4.5	3	700
750	20	9	5	3	750
800	20	8	4.5	2.5	800
1000	25	10	6	3	100
1200	30	12	6	3	120
1250	30	12	6	3	125
1500	35	12	5	-	150
1600	35	12	5	-	160
2000	40	12	3	-	200
2500	45	10	-	-	250

1A or 5A Secondary

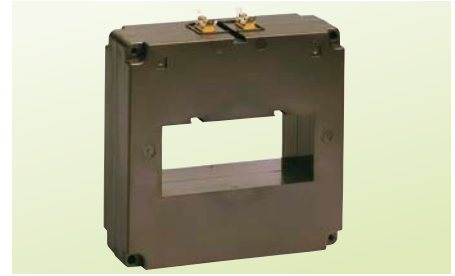
### How to Order / Model Reference

eg **TAWB 50 C 600**

Model	TAWB						
Output							
-/5A Secondary			50				
-/1A Secondary			10				
Primary							
300...800A				C			
1000...2500A					D		
Range							
Select code from ratio table above							???

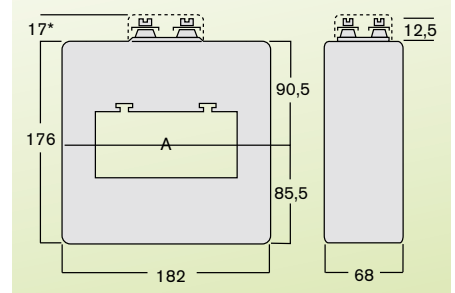
DATA SHEET : RD1375

## TAWC (Formerly TAS125P) Protection Current Transformers



- Busbar window 127 x 54mm
- Secondary terminals M4 screws and 6.3 x 0.8mm fast-on
- Supplied with busbar mounting bracket and fixing feet
- Secondary pillar screw terminals
- Optional sealable terminal cover (ATACOP03)
- Weight 3600g

### Dimensions



### Current Transformer Ratios

Primary Current A	Burden				Code
	cl. 5P5 VA	cl. 5P10 VA	5P51 VA	5P20 VA	
400	12	6	3.5	2.5	400
500	15	7	4	3	500
600	20	10	5	4	600
700	20	10	6	4	700
750	25	10	7	5	750
800	25	10	7	5	800
1000	30	15	8	6	100
1200	35	15	8	6	120
1250	35	15	8	6	125
1500	40	20	10	6	150
1600	40	20	10	6	160
2000	52	20	10	4	200
2500	60	20	10	3	250
3000	80	25	10	3	300
4000	100	30	15	3	400

1A or 5A Secondary

### How to Order / Model Reference

eg **TAWC 50 C 600**

Model	TAWC						
Output							
-/5A Secondary			50				
-/1A Secondary			10				
Primary							
200...800A				C			
1000...3000A					D		
Range							
Select code from ratio table above							???

DATA SHEET : RD1380